

HIGH PRECISION SLEEVE FOR CNC AUTOMATIC TURNING MACHINE

BEST CHOICE FOR PRECISE DRILLING AND HIGH ACCURACY REAMING

NEW

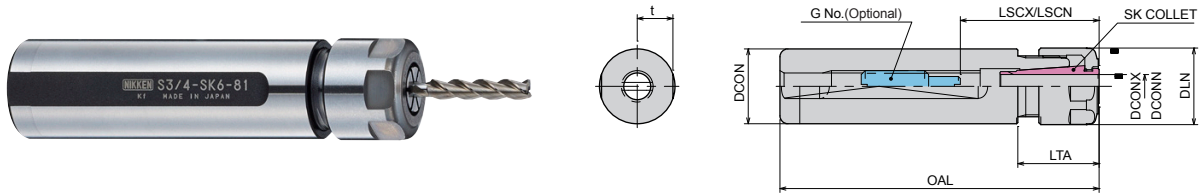


NIKKEN

NIKKEN KOSAKUSHO WORKS, LTD.

SK SLEEVE (SLIM CHUCK)

High accuracy Slim Chuck makes it possible to achieve precise hole-making operation.



Code.No.	Tool Shank Dia. DCON	t	Chucking Dia. DCONN~DCONX	Total Length OAL	Stem Length LTA	Nut Dia. DLN	Adjustable Range LSCN~LSCX	G No. (Optional)	Weight (kg)	Collet	Wrench (Optional)
ST3/4(20)-SK 6- 81	19.05(20)	9	0.7 ~ 6.0	80.5	20.5	19.5	21 ~ 35	SKG-8	0.14	SK6	SKL-6W (SKL-6WS)
140.5				0.26							
96.5				0.17							
ST1(25) -SK10- 82	25.4(25)	11	1.75 ~ 10.0	82.1	22.1	27.5	30 ~ 57	SKG-12L	0.23	SK10	SKL-10
142.1				0.40							
97.1				0.30							
ST1CM -SK10- 97	25.4						30 ~ 60				

Nut is included.

Please confirm the machine specification. The modification is sometimes required.

Collet is not included.

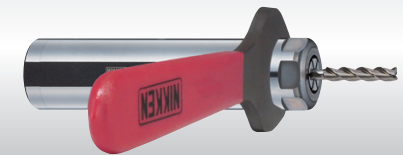
Tool shank Dia 22mm and 15.875mm are available. (Optional) (Ex.) S22-SK6-141

FOR SK SLEEVE SK COLLET



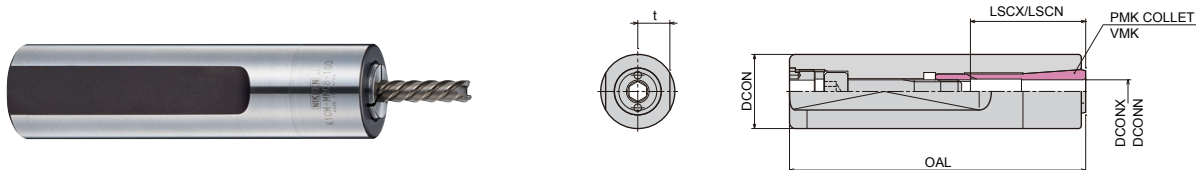
Code No.	Chucking Dia.	Code No.	Chucking Dia.
SK6 - 0.8	0.7 ~ 0.8	SK10- 2	1.75 ~ 2.0
- 1	0.9 ~ 1.0	- 2.25	2.0 ~ 2.25
- 1.25	1.15 ~ 1.25	- 2.5	2.25 ~ 2.5
- 1.5	1.3 ~ 1.5	- 2.75	2.5 ~ 2.75
- 1.75	1.55 ~ 1.75	- 3	2.75 ~ 3.0
- 2	1.8 ~ 2.0	- 3.5	3.0 ~ 3.5
- 2.25	2.05 ~ 2.25	- 4	3.5 ~ 4.0
- 2.5	2.3 ~ 2.5	- 4.5	4.0 ~ 4.5
- 2.75	2.55 ~ 2.75	- 5	4.5 ~ 5.0
- 3	2.8 ~ 3.0	- 5.5	5.0 ~ 5.5
- 3.5	3.0 ~ 3.5	- 6	5.5 ~ 6.0
- 4	3.5 ~ 4.0	- 6.5	6.0 ~ 6.5
- 4.5	4.0 ~ 4.5	- 7	6.5 ~ 7.0
- 5	4.5 ~ 5.0	- 7.5	7.0 ~ 7.5
- 5.5	5.0 ~ 5.5	- 8	7.5 ~ 8.0
- 6	5.5 ~ 6.0	- 8.5	8.0 ~ 8.5
		- 9	8.5 ~ 9.0
		- 9.5	9.0 ~ 9.5
		- 10	9.5 ~ 10.0

Wrench (Optional) SKL-6W, SKL-10



Small size wrench "SKL-6WS" is available when there is some interferences.

MMC SLEEVE (MINI MINI CHUCK)



Code.No.	Tool Shank Dia. DCON	t	Chucking Dia. DCONN~DCONX	Total Length OAL	Adjustable Range LSCN~LSCX	Collet	Wrench (Optional)
K5/8CM-MMC4- 50	15.875	7	1.0 ~ 4.0	52.0	16 ~ 24	MPK4	Hex 4mm
K3/4CM-MMC8- 80	19.05	9	1.8 ~ 8.0	81.5	22 ~ 41	PMK8	Hex 6mm or EA573KL-6
K20CM -MMC8-100	20.0			101.5			
K1CM -MMC8-100	25.4	11		101.5			

Both Collet and Wrench are not included.

FOR MMC4 MPK COLLET



Code No.
MPK4-1, 1.5, 2, 2.5, 3, 3.5, 4

MPK Collet clamping range: h6

FOR MMC8 PMK VMK COLLET



Code No.
PMK VMK 8-2, 2.2, 2.4, ...3, ...4, ...5, ...6, ...7, ...8 (Each 0.2mm)

Choosing exactly the same size with tool shank (tolerance h6) is highly recommended.
PMK / VMK Collet Clamping Range: 0.2mm

Clamp / Unclamp from the back side of the tool

EA573KL-6

